



MAILED/EMAILED

TO: All Vendors
Nancy Williams, Quality Assurance Analyst
Chris James, Augusta Fire Department

FROM: Geri A. Sams *geri ps*
Procurement Director

DATE: May 20, 2019

SUBJ: **Clarifications to the Specifications and Responses to Vendor's Questions**

BID ITEM: **Bid Item 19-185 Construction of New Fire Station #3 and #20 for Augusta, GA – Fire Department**

BID OPENING DATE: Thursday, May 30, 2019 @ 3:00 p.m.

ADDENDUM 4

Bidders on this project are hereby notified that this Addendum shall be attached to and made part of the above-named Bid Package. The changes and clarifications shall supplement the contract documents for the above referenced project. Changes shown in this document shall supersede previously dated contract documents. **Acknowledge receipt of all Addendums on Attachment B within the Specifications package.**

Clarifications to the Specifications:

- **Due to unforeseen site conditions and the extent of these conditions, the Augusta Fire Department at this time, is altering the Bid requirements on this project to include ONLY work to be performed on Fire Station #20. Fire Station #3 is being removed from the bid requirements and will be re-issued at a later date that is to be determined.**
- **The following notes are to be included as part of ELECTRICAL GENERAL NOTES on DRAWING E-001**

FIRE ALARM SYSTEM

PROVIDE AND INSTALL COMPLETE FIRE ALARM SYSTEM. SYSTEM COMPONENTS AND INSTALLATION SHALL CONFORM TO THE NATIONAL FIRE ALARM CODE (NFPA 72-2014). ALL EXPOSED WIRING SHALL BE INSTALLED IN METALLIC RACEWAY. ALL CONCEALED WIRING SHALL BE INSTALLED IN METALLIC RACEWAY STUBBED ABOVE ACCESSIBLE CEILING.

LIGHTNING PROTECTION SYSTEM

PROVIDE AND INSTALL COMPLETE LIGHTNING PROTECTION SYSTEM. SYSTEM COMPONENTS AND INSTALLATION SHALL CONFORM TO NFPA 780-2011.

Responses to Vendor's Questions:

1. QUESTION: In the Plumbing Piping Insulation Specification 220719 Sub-Section 3.12 : Indoor, Field-Applied Jacket Schedule. The specification is calling for field applied 20 mils PVC Jacketing to be applied over all. Piping insulation with Factory-supplied jacketing that are both located in Concealed & Exposed Areas. Is this the correct intent of the specification?

Room 605 - 535 Telfair Street, Augusta Georgia 30901
(706) 821-2422 - Fax (706) 821-2811

www.augustaga.gov

Register at www.demandstar.com/supplier for automatic bid notification



Scan this QR code with your smartphone or camera equipped tablet to visit the Augusta, Georgia

This specification as listed, will almost double the costs of the domestic water piping insulation. I can see where in exposed areas that this application would be desirable but in concealed areas like ceilings & walls, I cannot see the benefit to the customer.

RESPONSE: Only exposed piping will require a PVC jacket. Concealed piping in walls or above ceilings do not require a PVC jacket.

2. QUESTION: Addendum #2 refers to a Spec Section 107000 Aluminum Canopy and a sketch for corner guard locations, but I did not find either of these items included in the Addendum. Please provide this information.

RESPONSE: Spec 107000 Aluminum Canopy is now included in addition to the corner guard location sketch attached to this Addendum 4.

3. QUESTION: Has a brick manufacturer or color been selected or are we to use a specified brick material allowance? Please clarify.

RESPONSE: A red brick (exact color to be determined) is to be provided through either Cherokee Brick or Meridian Brick.

4. QUESTION: Addendum #2 question 17 states that there will be an aluminum canopy spec attached to this addendum. The spec was not included. Please advise.

RESPONSE: Spec 107000 Aluminum Canopy is now included with this Addendum 4.

5. QUESTION: The truss elevations on S-201 do not show enough information to accurately price the steel. A note says "beam flange, typ. see elevation for size," but the elevations do not show the size. Please provide more information on the steel used for the trusses.

RESPONSE: Please see revised drawing S-202_R1 for steel sizes attached to this Addendum 4.

6. QUESTION: On sheet A-103, wall type 3 is an exterior wall with Dense glass and Tyvek. The exterior wall details on sheet A-602 show plywood sheeting. Which is the correct detail?

RESPONSE: Wall Type 3 should be ½ plywood w/ a Tyvek building wrap.

7. QUESTION: Can McElroy Metals be added as an approved manufacturer for the standing seam metal roof?

RESPONSE: Yes. McElroy Metals is an approved manufacturer.

8. QUESTION: Addendum Number 2, Question 22 states the Mezzanine Framing on 2/S-201 is attached to this addendum. This detail is not attached to this addendum. Can you please provide this detail?

RESPONSE: Detail 2/S-201 was included as part of the original bid documents. The floor finish for mezzanine will be a sealed concrete.

Please acknowledge addendum in your submittal

END ADDENDUM

**ATTACHMENTS: SECTION 107000-Aluminum Canopy (2 PAGES)
CORNER GUARD LOCATION SKETCH (1 PAGE)
DRAWING S-202 (1 PAGE)**

SECTION 107000 - ALUMINUM CANOPY

PART 1 – GENERAL

1.1 SUMMARY

- A. Section Includes: Helios Canopy.
- B. Related Requirements: Division 1 – General Requirements

1.2 REFERENCES

- A. The publications listed below form a part of this specification to the extent referenced. Publications are referenced within the text by the basic designation only.
- B. American Welding Society (AWS):
 - i. Standard D1.2 – Structural Welding Code – Aluminum
- C. American Architectural Manufacturers Association (AAMA):
 - i. Aluminum finishes AAMA 2603 Powder Coat
 - ii. Aluminum finishes AAMA 2605 Kynar
 - iii. Aluminum finishes AAMA 611 Anodize

1.3 SUBMITTALS

- A. Submit within 15 days after contract award.
- B. Shop Drawings: Indicate size, material and finish. Include plan elevation pages to clearly outline canopy locations. Include installation procedures, details of joints, attachments and clearances. Provide lead time for product and note possible conflicts with standard line.
- C. Color charts showing manufacturer's full range of colors from standard line.

PART 2 – PRODUCTS

2.1 APPROVED MANUFACTURERS

- A. Specifications are based on Architectural Fabrication, Inc. – Helios Canopy. Architectural Fabrication, Inc. – Manufacturer and Installer is located at 2100 E. Richmond Avenue, Fort Worth, TX 76104. 800.962.8027. www.arch-fab.com
- B. Substitutions are acceptable assuming they comply with these specifications, are submitted based on Section 012500 – Substitution Procedures and have a minimum 10 years' experience.

2.2 MATERIALS

- A. Framing: Gutter fascia, tube, angles: 6063-T5 alloy extruded aluminum
- B. Decking: 6063-T6 or 6063-T5 alloy extruded aluminum (Roll form is NOT acceptable)

- C. Hanger Rods: Zinc plated steel and powder coat (Prime and paint are not acceptable)
- D. Connections: Wall plates and canopy mounting brackets are to be aluminum.
- E. Hardware and Fasteners: Nuts, bolts, washers, clevis pins, screws, anchors and pipe spacers to be zinc plated or galvanized steel required to suit application and per pre-engineered canopy load requirements.
- F. Flashing: Shall be minimum 0.040-inch aluminum, fabricated to prevent leakage and sealed with Novaflex metal roof sealant in clear or color match. Other equivalent sealant is acceptable.
- G. Finish: Powder coat finish per ASTM D 3451, complying with finish manufacturer's written instructions for surface preparation including pretreatment, application, baking and minimum dry film thickness. Color to be selected from standard color line.

PART 3 – EXECUTION

3.1 FABRICATION

- A. Fabricate and preassemble canopies in the shop to greatest extent possible. Disassemble units only as necessary for shipping and handling limitations. Clearly mark units for reassembly and coordinated installation.

3.2 INSTALLATION

- A. Install canopies per manufacturer's written instructions and as indicated on drawings.
- B. Locate and place canopies level, plumb and at indicated alignment with adjacent work.
- C. Use concealed anchors where possible.
- D. Repair damaged finishes so no evidence remains of corrective work. Return items to the factory that cannot be refinished in the field. Make required alterations and refinish entire unit or provide new units.
- E. Protect galvanized and nonferrous-metal surfaces from corrosion or galvanic action by applying a coating of bituminous paint or elastomeric coating on surfaces that will be in contact with concrete, masonry or dissimilar metals.

END OF SECTION

THE DRAWING IS THE PROPERTY OF JOHNSON LAKSCHROBER & ASSOCIATES, P.C. THE UNDERSIGNED ENGINEER, ARCHITECT OR DESIGNER HAS PREPARED THIS DRAWING AND ASSUMES RESPONSIBILITY FOR THE DESIGN AND CONSTRUCTION OF THE WORK SHOWN HEREON. THE DRAWING IS TO BE USED ONLY FOR THE PROJECT AND SITE SPECIFICALLY IDENTIFIED HEREON. ANY REUSE OF THIS DRAWING FOR ANY OTHER PROJECT WITHOUT THE WRITTEN CONSENT OF JOHNSON LAKSCHROBER & ASSOCIATES, P.C. IS STRICTLY PROHIBITED.

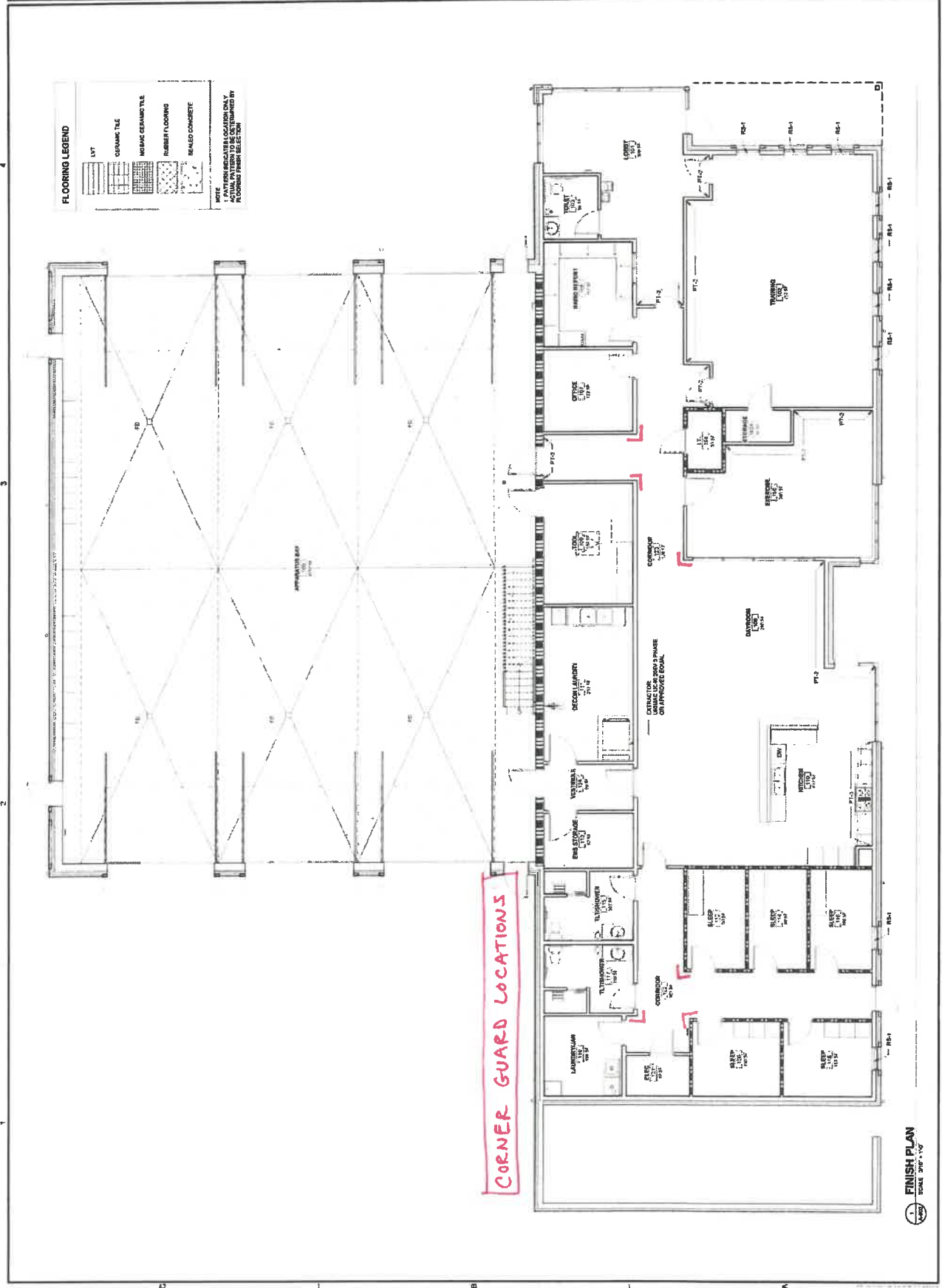
 <p> JOHNSON LAKSCHROBER & ASSOCIATES, P.C. ARCHITECTS AND ENGINEERS 111 W. MARKET STREET, SUITE 1100 AUGUSTA, GA 30601 </p>	<p> PROJECT NAME: FIRE STATION #20 </p> <p> LOCATION: 2820 OLD HIGHWAY 1, HEMPENHAM, GA 30815 </p>	<p> DATE: 02/14/16 DESIGNED BY: WLD DRAWN BY: WLD </p>	<p> SHEET TITLE: ROOM FINISH PLAN </p>
--	---	---	---

SCALE: AS NOTED
A-802

FLOORING LEGEND

	LVT
	CERAMIC TILE
	PORCELAIN CERAMIC TILE
	RUBBER FLOORING
	SEALED CONCRETE

NOTE:
 1. PATTERNS INDICATE LOCATION ONLY.
 2. FINISH TO BE DETERMINED BY
 ARCHITECT/OWNER.





Since 1980
Architects • Engineers • Landscape Architects
JOHNSON, LASCHOB &
ASSOCIATES, P.C.
AUGUSTA, GA • MT. PLEASANT, SC
TEL (706) 724-5756 • TEL (843) 619-4656
FAX (706) 724-3955
WWW.THEJLAGROUP.COM

AUGUSTA, GA
535 TELFAIR STREET, AUGUSTA, GA 30901

FIRESTATION #20

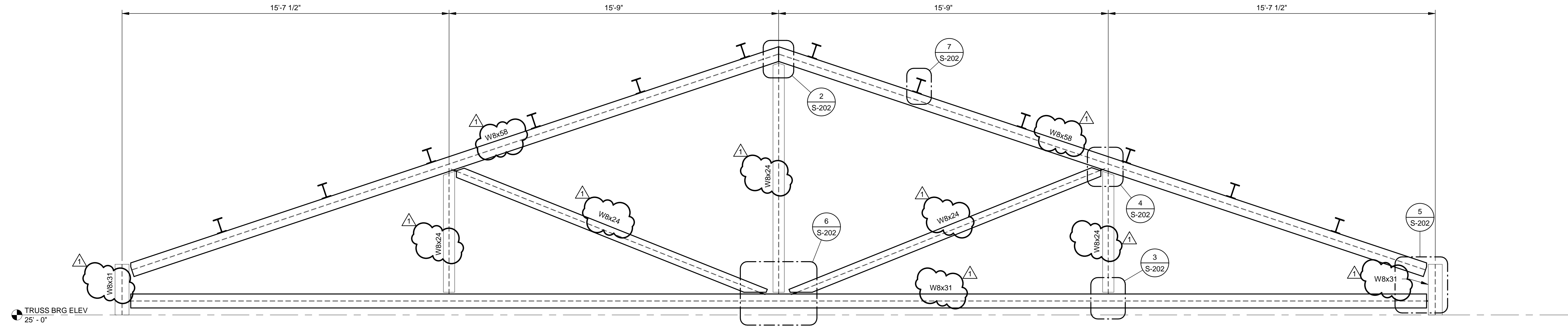
CLIENT: AUGUSTA, GA
PROJECT NAME: 535 TELFAIR STREET, AUGUSTA, GA 30901
PROJECT LOCATION: 2820 OLD HIGHWAY 1, HEPHZIBAH, GEORGIA 30815

CLIENT:

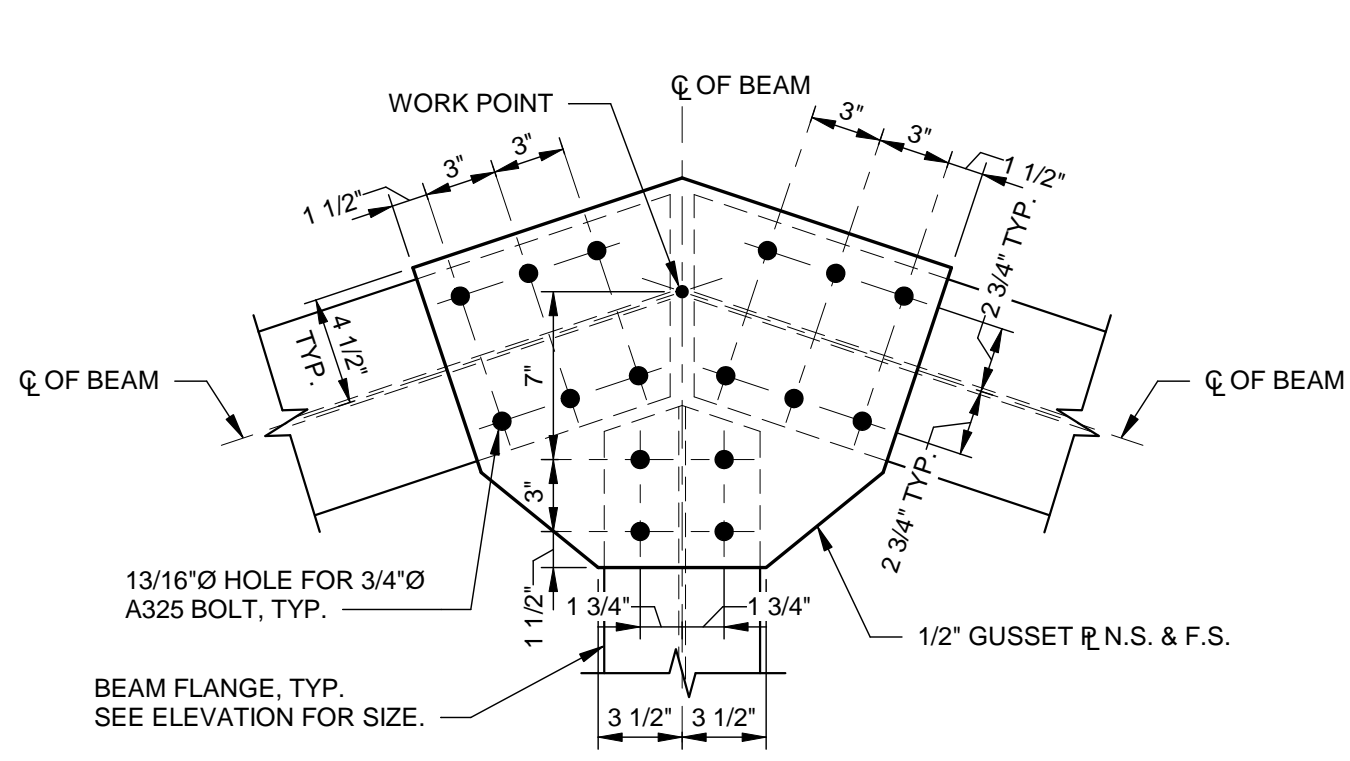
PROJECT NAME:

PROJECT LOCATION:

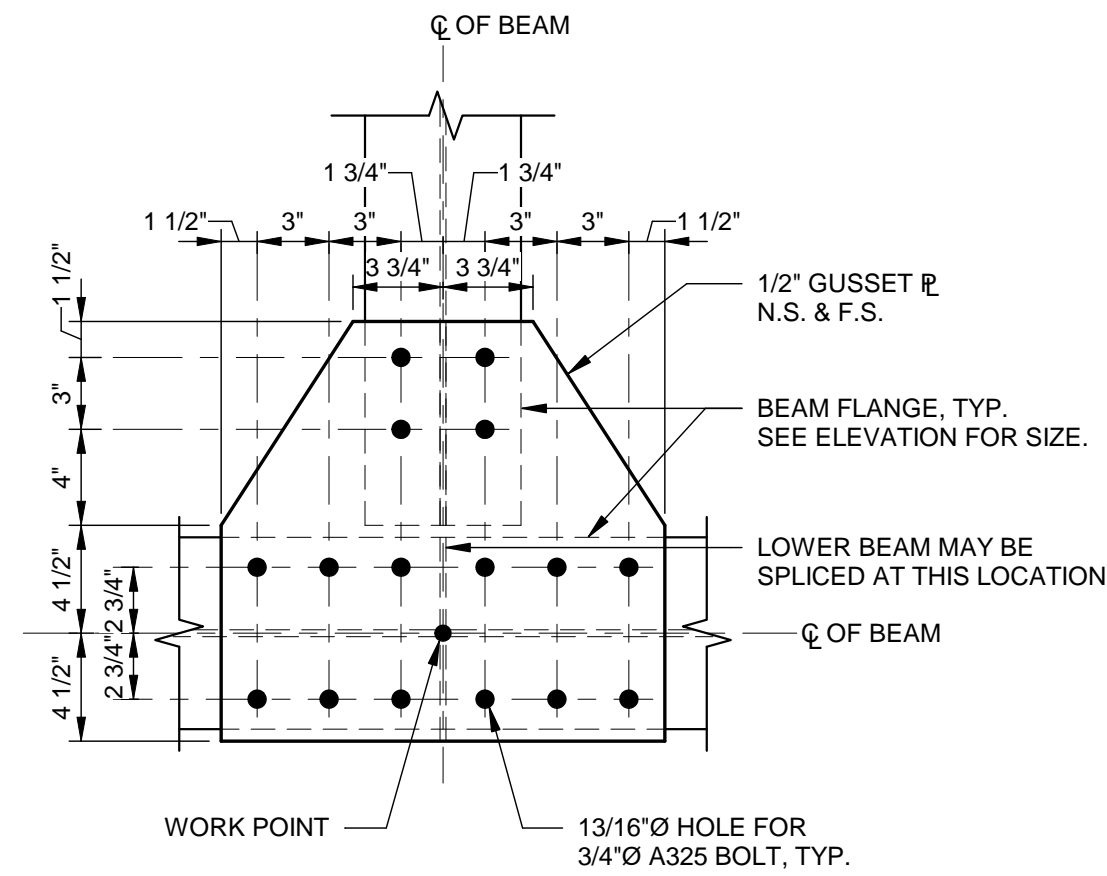
This document is the property of Johnson, Laschober & Associates, P.C. The unauthorized reproduction, copying or otherwise use of this document is strictly prohibited and any infringement thereupon may be subject to legal action.



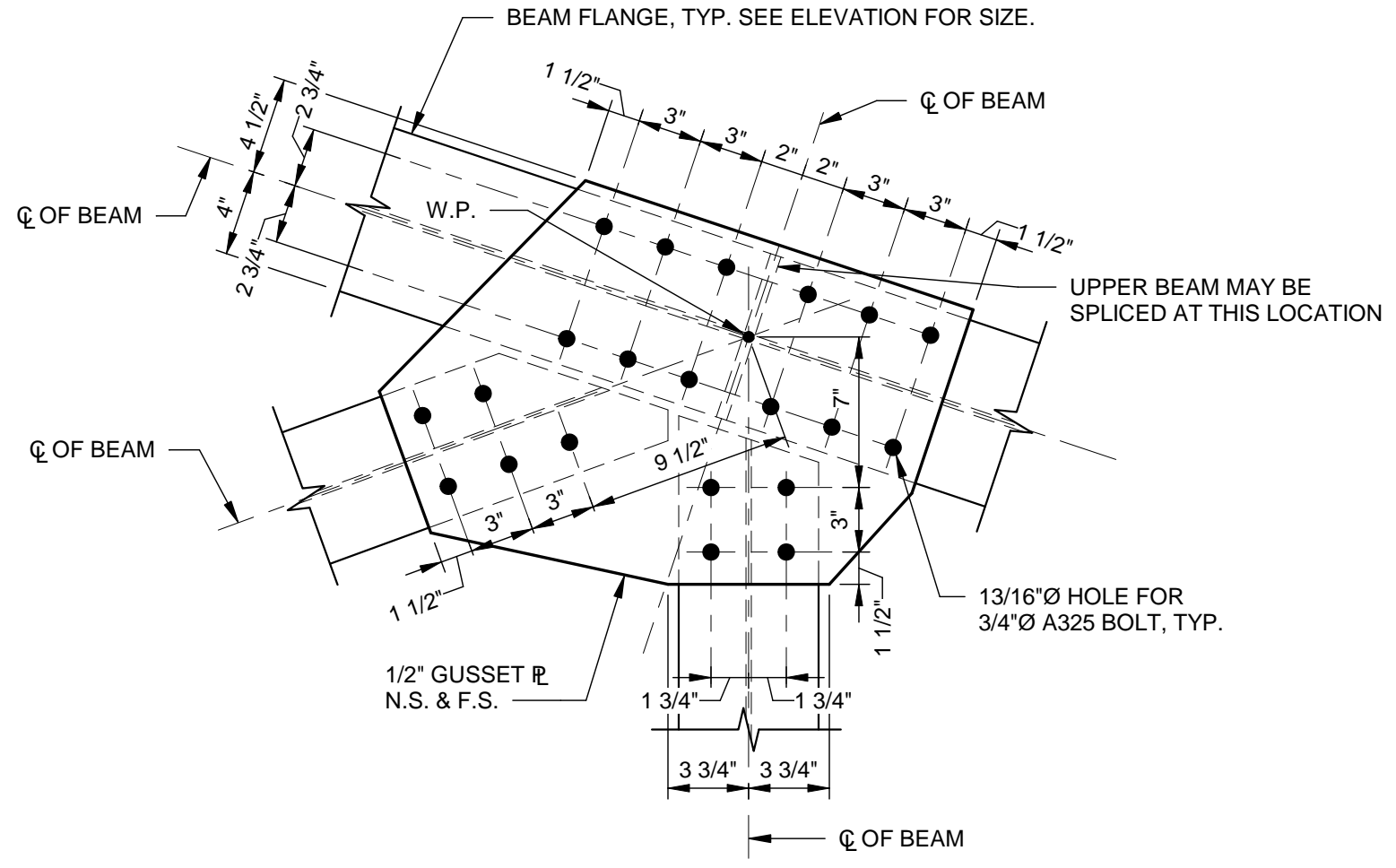
1 TRUSS ELEVATION
SCALE: 3/8" = 1'-0"



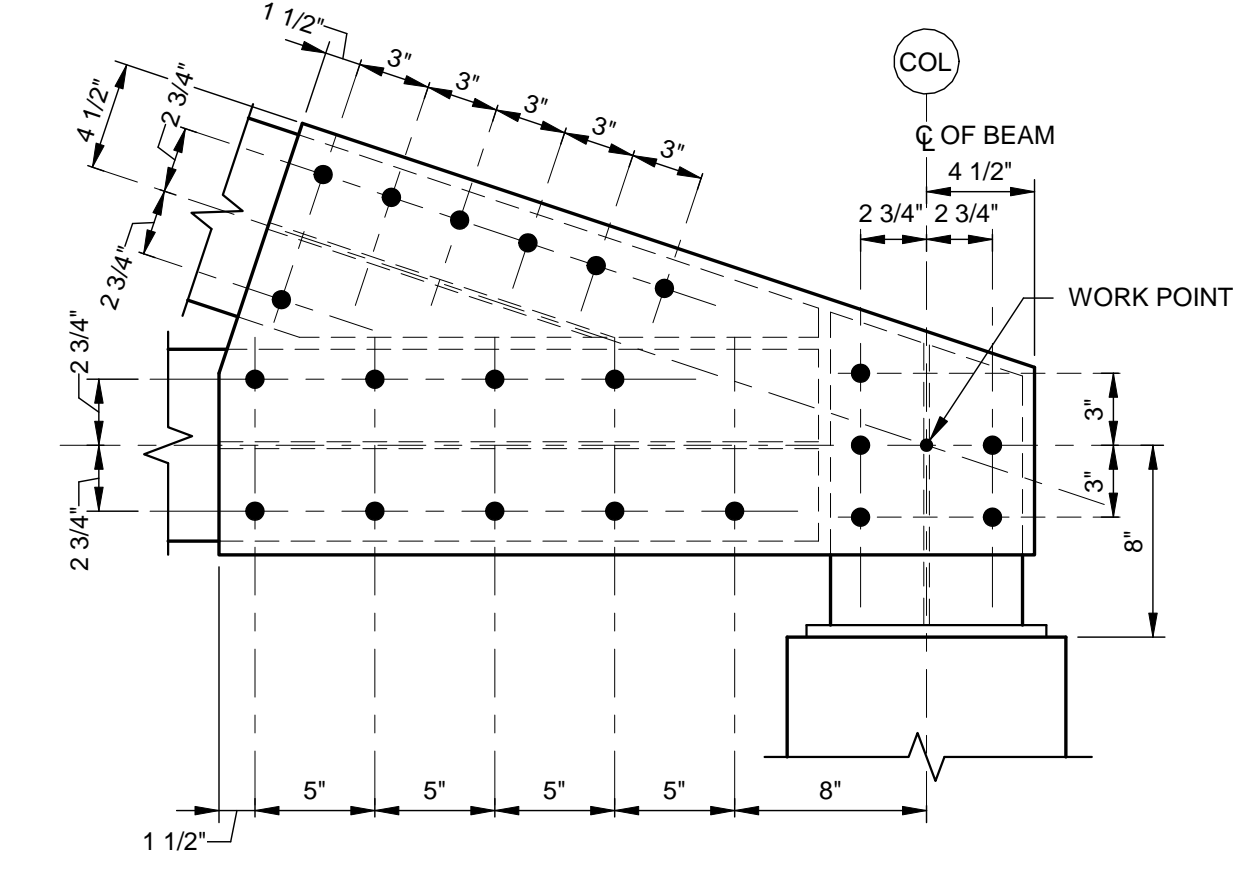
2 DETAIL
SCALE: 1 1/2" = 1'-0"



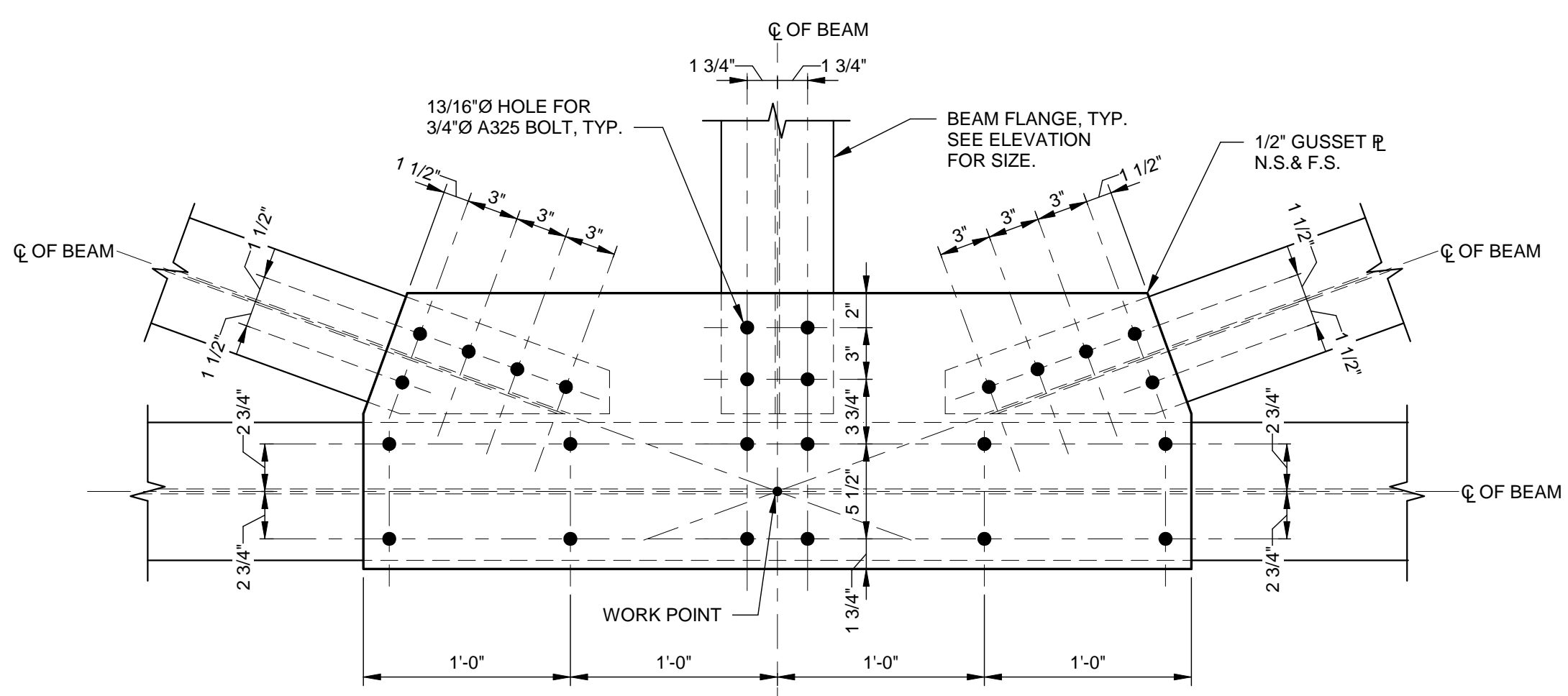
3 DETAIL
SCALE: 1 1/2" = 1'-0"



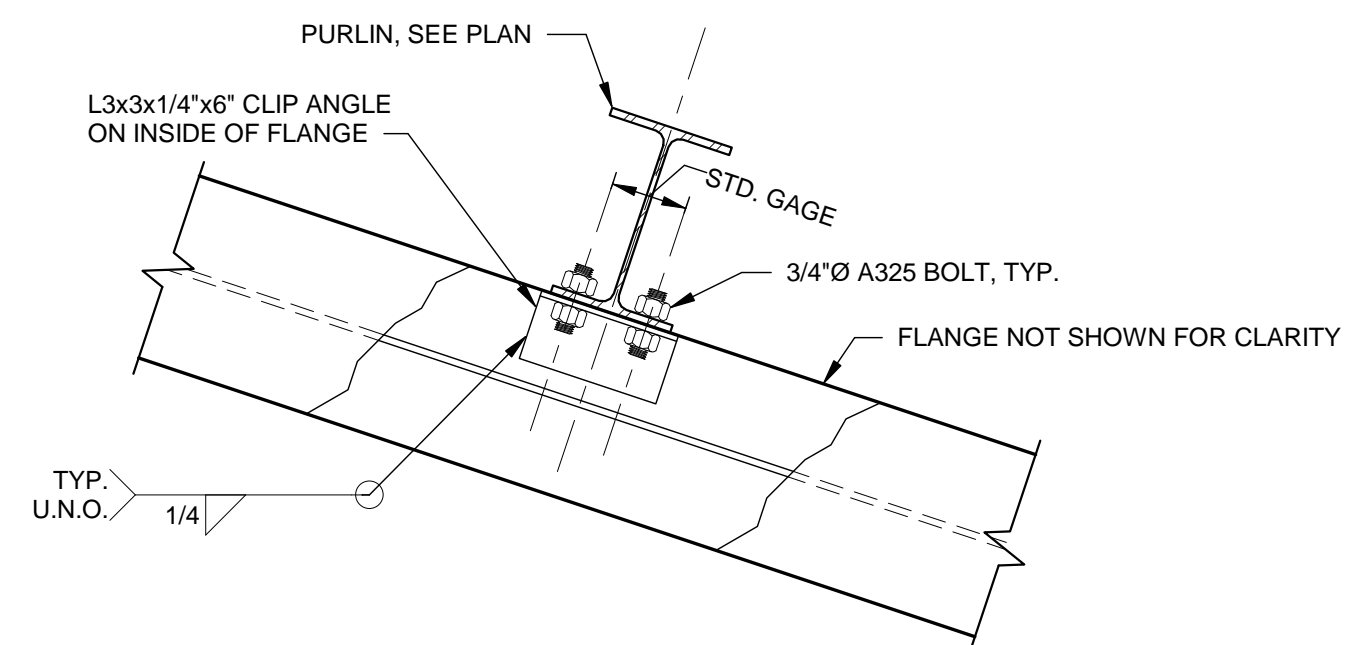
4 DETAIL
SCALE: 1 1/2" = 1'-0"



5 DETAIL
SCALE: 1 1/2" = 1'-0"



6 DETAIL
SCALE: 1 1/2" = 1'-0"



7 DETAIL
SCALE: 1 1/2" = 1'-0"

REV	DATE	BY	DESCRIPTION
1	03/21/19	MWL	ADDENDUM #3
0	1/22/18	MWL	ISSUED FOR BID

PROJECT NO. 3042.1604
DRAWN BY: CB
CHECKED BY: MWL
DATE: 8/10/18

TRUSS ELEVATION AND DETAILS

SCALE AS NOTED

DRAWING NO. **S-202** REV. **1**

ORDER: JLA\30421604_REV_02\2018\18-08